



-  
, 1      11  
( . )

**ABBYY®**

2017 .

1.	3
1.1.	3
1.2.	3
2.	4
2.1.	4
2.2.	4
2.2.1.	5
2.3.	5
3.	6
3.1.	6
3.1.1.	6
3.2.	6
4.	7
4.1.	7
4.2.	7
4.3.	8
4.4.	9
5.	11
5.1.	11
5.1.1.	11
5.2.	11
5.3.	11
6.	13
6.1.	13
6.1.1	13
6.2.	13
7.	14
7.1.	14
7.1.1.	14
7.2.	14
7.3.	14
7.3.1.	14
7.4.	15

# 1.

## 1.1.

: , 1  
: ( )  
: 11  
: 15/12/2017 00:30  
: ✓

: 6

: 59

## 1.2.

	13/12/2017 05:00	19/12/2017 14:00
	13/12/2017 05:00	19/12/2017 14:00
	13/12/2017 05:00	19/12/2017 14:00
	15/12/2017 05:00	21/12/2017 14:00
	15/12/2017 05:00	21/12/2017 14:00
	25/12/2017 05:00	

## 2.

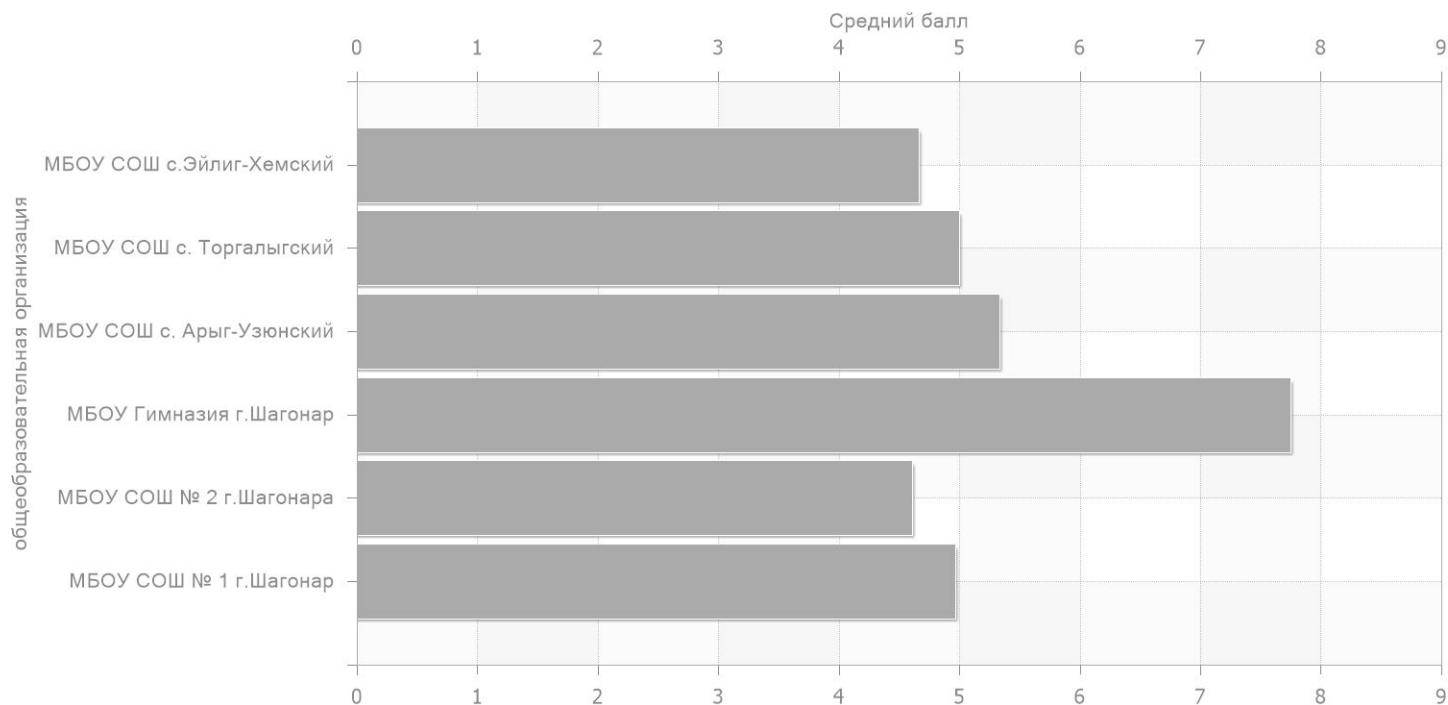
### 2.1.

59	32	5.05	15.78	36	61.02

### 2.2.

1 .	29	4.97	15.52	17	58.62
2 .	18	4.61	14.41	14	77.78
.	4	7.75	24.22	1	25.00
. -	3	5.33	16.67	1	33.33
.	2	5	15.62	1	50.0
. -	3	4.67	14.58	2	66.67

2.2.1.



2.3.

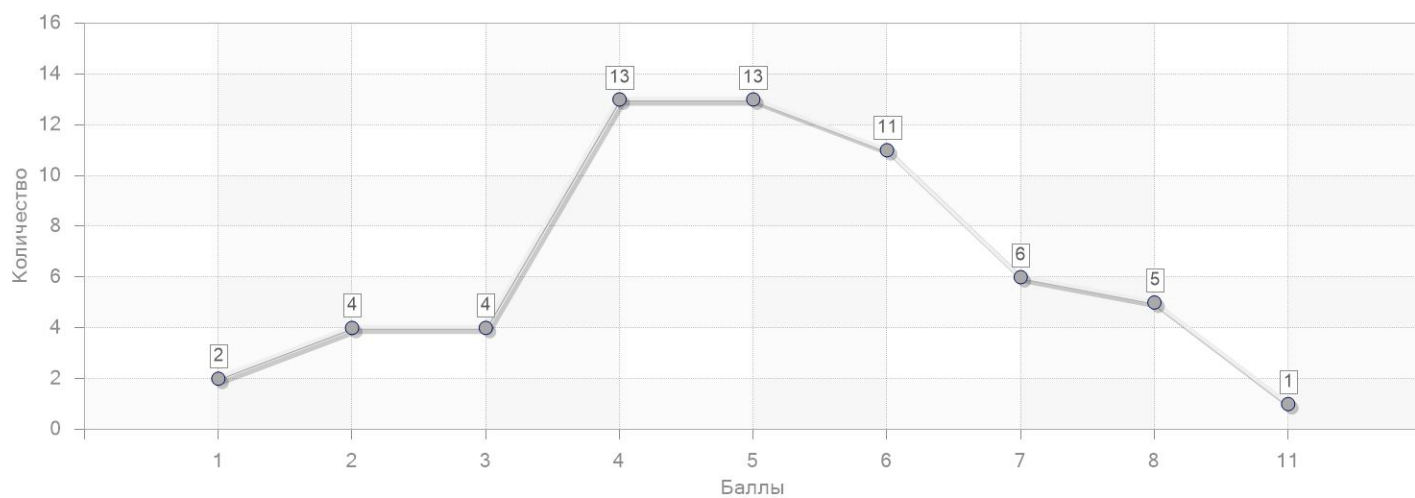
1 .	4.97	15.52	58.62	-0.09	-0.27	-2.40
2 .	4.61	14.41	77.78	-0.44	-1.37	16.76
.	7.75	24.22	25.00	2.70	8.43	-36.02
. -	5.33	16.67	33.33	0.28	0.88	-27.68
.	5	15.62	50.0	-0.05	-0.16	-11.02
. -	4.67	14.58	66.67	-0.38	-1.20	5.65

### 3.

#### 3.1.

1	2	3.39
2	4	6.78
3	4	6.78
4	13	22.03
5	13	22.03
6	11	18.64
7	6	10.17
8	5	8.47
11	1	1.69

#### 3.1.1.



#### 3.2.

1	29	4.62	14.44	19	65.52
2	30	5.47	17.08	17	56.67

4.

4.1.

	41.38
	0.64
	0.28

4.2.

1.1.3		0.00
2.2		0.00
3.3		0.00
5.1		0.00
2.1		0.00
3.2		0.00
2.1.4		0.85
2.2.2		0.85
5.3		0.85
5.5		0.85
5.6		0.85
1.3		1.27
1.2		1.27
1.4		1.27
1.1		1.27
2.1.12		1.85
2.1.2		2.71
2.1.1		2.71
1.1.1		10.17
4.1.1		11.86
4.2.1		12.71

## 4.2.

4.1.5		13.56
3.2.6		13.56
5.2		14.92
1.2.7		18.64
6.3		40.68
5.1.3		42.37
5.1.1		42.37
5.1.5		42.37
5.5.3		56.78
2.1.5		66.10
5.3.1		71.19
6.2.1		91.53

## 4.3.

2.3		0.00
2.2		0.00
5.3		0.75
5.1		1.20
6.3		2.42
2.1		4.09
5.2		4.16
6.1		10.17
4.1	( )	10.59
3.1		12.71
3.2		12.71
3.3		12.71
4.2	); ( )	14.92
1.3		18.64
1.1		18.64



### 4.3.

1.2		18.64
5.4		40.68
6.2		91.53

### 4.4.

1	1.1.1	6.1	71.19
2	6.2.1	6.2	91.53
3	5.1.5	4.1	42.37
4	6.3	5.4	40.68
5	2.1.5	2.1	66.10
6	5.5.3 ; 5.1.3 ; 5.1.1	5.2 ; 4.1	42.37
7	4.1.1 ; 4.2.1	3.2 ; 3.3 ; 3.1	11.86
8	5.5.3 ; 5.3.1 ; 5.2	4.2	71.19
9	1.2.7	1.1 ; 1.2 ; 1.3	18.64
10	2.1.12	6.3	16.95
11	2.1.1 ; 2.1.2	5.1	10.17
12	3.2.6 ; 4.1.5 ; 4.2.1	3.2 ; 3.3 ; 3.1	13.56

4.4.

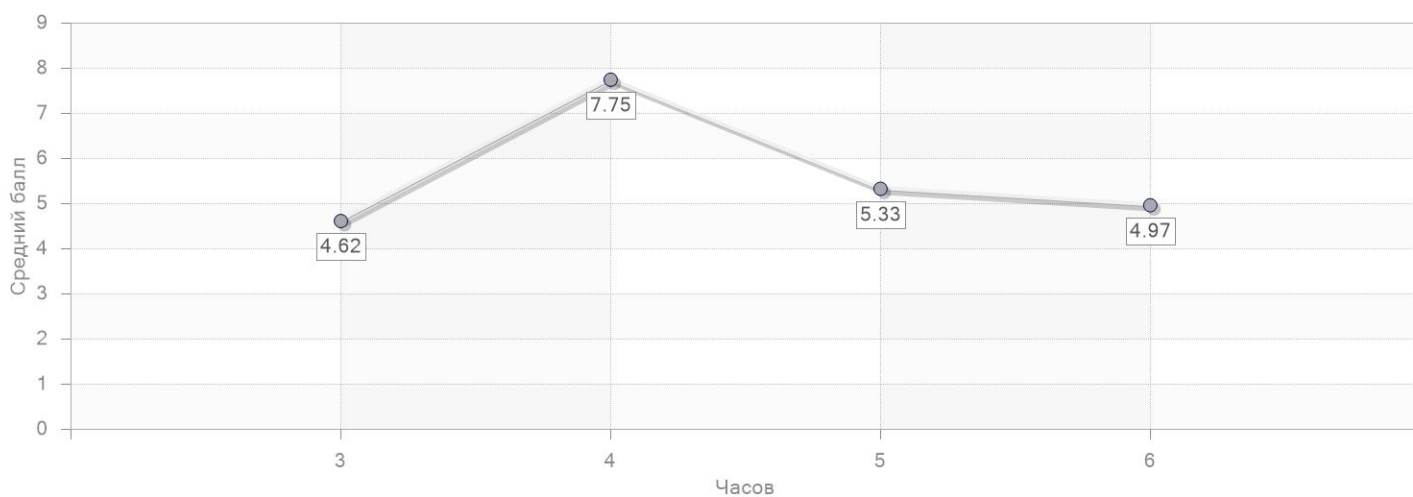
13	2.1.1 ; 2.1.12 ; 2.1.2 ; 2.2.2 ; 2.1.4	2.1	0.85
14	5.5 ; 5.3 ; 5.2 ; 5.6	5.2 ; 5.3 ; 4.2 ( , , , , ):	0.85
15	2.2	2.1 ; 2.3 ; 2.2	0.00
16	5.1	5.2 ; 5.3 ; 4.1 ( , , )	0.00
17	1.1.3 ; 2.1.12 ; 1.1.1	6.1 ; 6.3	0.00
18	2.2 ; 3.3 ; 3.2 ; 2.1	5.1 ; 2.1 ; 2.3 ; 2.2	0.00
19	1.3 ; 1.2 ; 1.1 ; 1.4	5.1 ; 5.3	1.27

## 5.

### 5.1.

3	21	4.62	14.43	16	76.19
4	4	7.75	24.22	1	25.00
5	3	5.33	16.67	1	33.33
6	31	4.97	15.52	18	58.06

#### 5.1.1.



### 5.2.

6	3.83	11.98	5	83.33	
23	5.22	16.30	14	60.87	
19	5.32	16.61	10	52.63	
17	5.29	16.54	9	52.94	
4	7.75	24.22	1	25.00	
17	5.76	18.01	8	47.06	
6	3.83	11.98	5	83.33	

### 5.3.

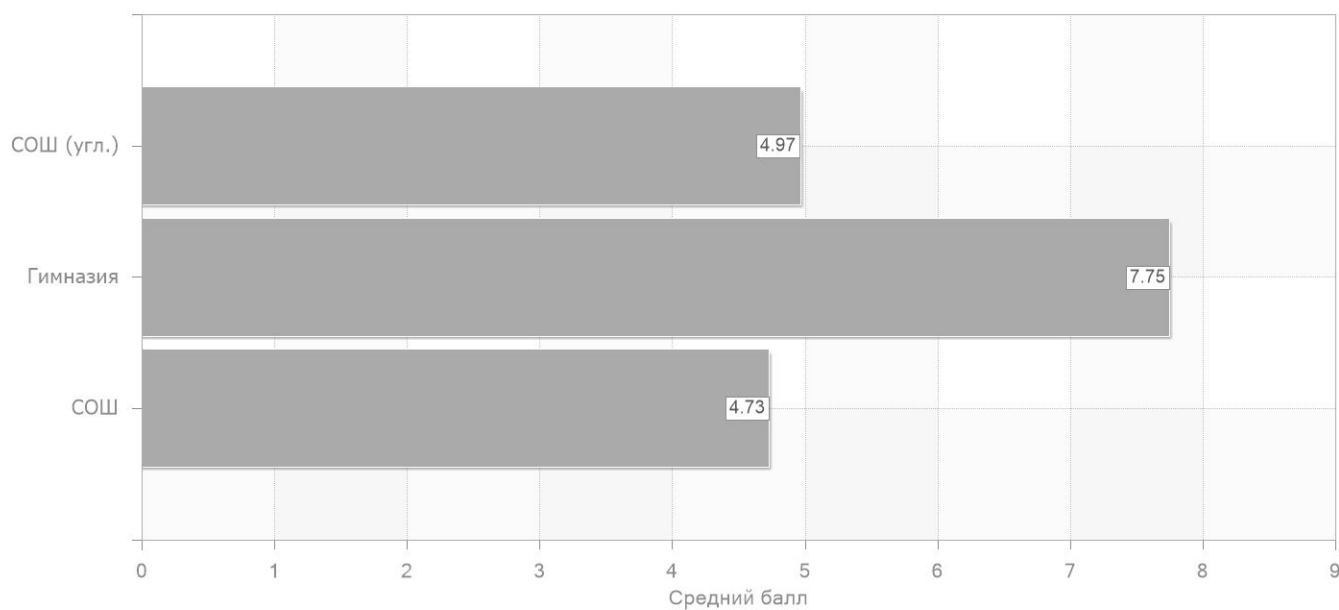
				-	
	59	5.05	15.78	36	61.02

## 6.

### 6.1.

	26	4.73	14.78	18	69.23
	4	7.75	24.22	1	25.00
( .)	29	4.97	15.52	17	58.62

#### 6.1.1



### 6.2.

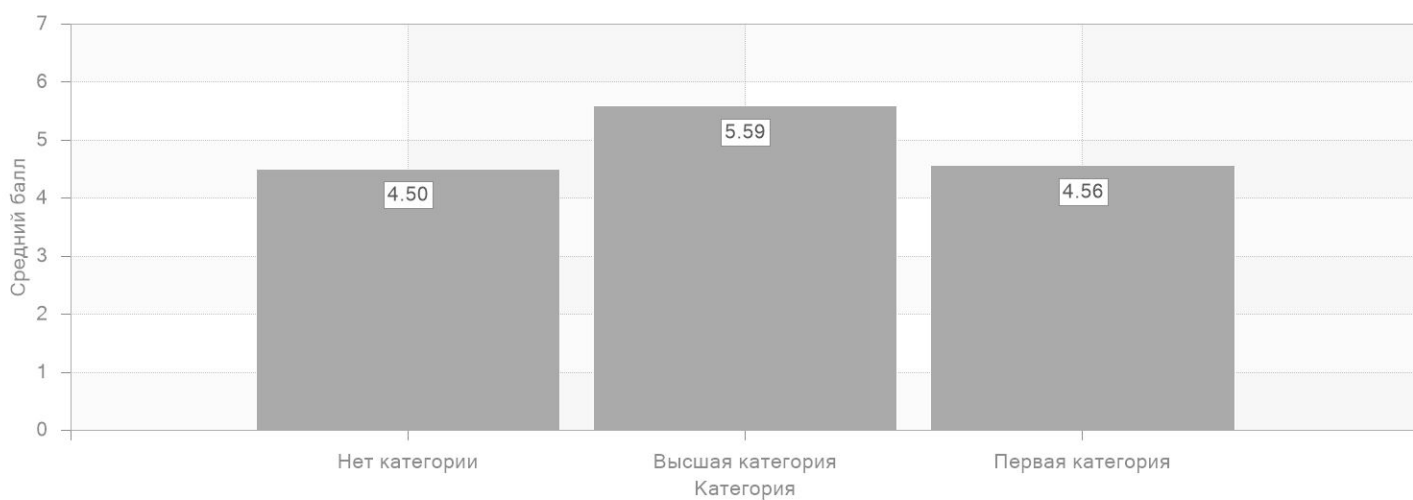
	59	5.05	15.78	36	61.02

## 7.

### 7.1.

	14	4.5	14.06	11	78.57
	29	5.59	17.46	15	51.72
	16	4.56	14.26	10	62.50

#### 7.1.1.



### 7.2.

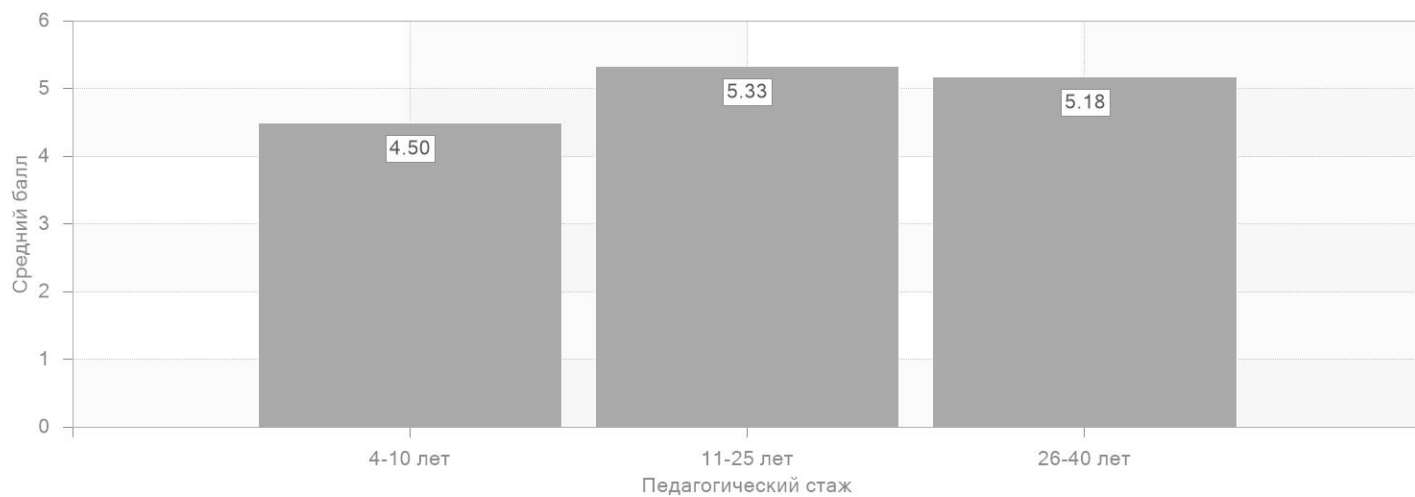
	59	5.05	15.78	36	61.02

### 7.3.

4-10	14	4.5	14.06	11	78.57
11-25	12	5.33	16.67	7	58.33
26-40	33	5.18	16.19	18	54.55

#### 7.3.1.

### 7.3.1.



### 7.4.

25-29	14	4.5	14.06	11	78.57
30-39	4	7.75	24.22	1	25.00
40-49	8	4.12	12.89	6	75.00
50-59	33	5.18	16.19	18	54.55