



, 1

11  
( . )

**ABBYY®**

2017 .

1.	3
1.1.	3
1.2.	3
2.	4
2.1.	4
2.2.	4
2.2.1.	5
2.3.	5
3.	7
3.1.	7
3.1.1.	7
3.2.	8
4.	9
4.1.	9
4.2.	9
4.3.	10
4.4.	11
5.	13
5.1.	13
5.1.1.	13
5.2.	13
5.3.	14
6.	15
6.1.	15
6.1.1	15
6.2.	15
7.	16
7.1.	16
7.1.1.	16
7.2.	16
7.3.	16
7.3.1.	16
7.4.	17

# 1.

## 1.1.

: , 1  
: ( )  
: 11  
: 15/12/2017 00:30  
: ✓

: 18

: 475

## 1.2.

	13/12/2017 05:00	19/12/2017 14:00
	13/12/2017 05:00	19/12/2017 14:00
	13/12/2017 05:00	19/12/2017 14:00
	15/12/2017 05:00	21/12/2017 14:00
	15/12/2017 05:00	21/12/2017 14:00
	25/12/2017 05:00	

## 2.

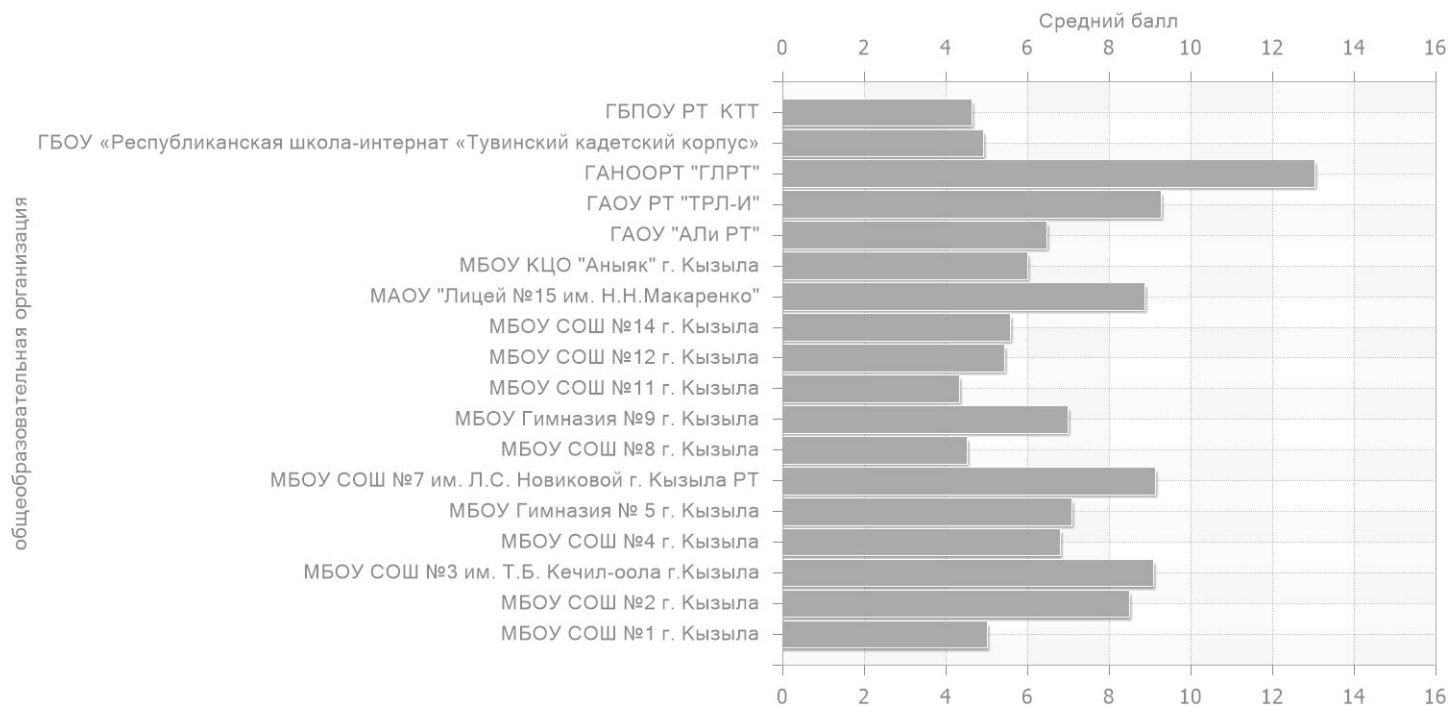
### 2.1.

475	32	7.32	22.88	148	31.16

### 2.2.

1 .	74	5.01	15.67	44	59.46
2 .	6	8.5	26.56	0	0
3 . . . . .	42	9.10	28.42	1	2.38
4 .	10	6.8	21.25	3	30.0
5 .	84	7.08	22.14	21	25.00
7 . . . . .	14	9.14	28.57	0	0
8 .	17	4.53	14.15	12	70.59
9 .	11	7	21.88	2	18.18
11 .	9	4.33	13.54	7	77.78
12 .	21	5.43	16.96	13	61.90
14 .	17	5.59	17.46	9	52.94
" 15 "	59	8.88	27.75	7	11.86
" "	4	6	18.75	2	50.0
" "	17	6.47	20.22	5	29.41
" - "	25	9.28	29.00	3	12.00
" "	34	13.03	40.72	0	0
« « »	12	4.92	15.36	8	66.67
	19	4.63	14.47	11	57.89

2.2.1.



2.3.

1 .	5.01	15.67	59.46	-2.31	-7.21	28.30
2 .	8.5	26.56	0	1.18	3.69	-31.16
3 . . . . .	9.10	28.42	2.38	1.78	5.55	-28.78
4 .	6.8	21.25	30.0	-0.52	-1.62	-1.16
5 .	7.08	22.14	25.00	-0.24	-0.74	-6.16
7 . . . . .	9.14	28.57	0	1.82	5.70	-31.16
8 .	4.53	14.15	70.59	-2.79	-8.72	39.43
9 .	7	21.88	18.18	-0.32	-1.00	-12.98
11 .	4.33	13.54	77.78	-2.99	-9.33	46.62
12 .	5.43	16.96	61.90	-1.89	-5.91	30.75
14 .	5.59	17.46	52.94	-1.73	-5.41	21.78
" 15 "	8.88	27.75	11.86	1.56	4.88	-19.29

2.3.

" "	6	18.75	50.0	-1.32	-4.12	18.84
" "	6.47	20.22	29.41	-0.85	-2.65	-1.75
" - "	9.28	29.00	12.00	1.96	6.12	-19.16
" "	13.03	40.72	0	5.71	17.84	-31.16
« « - »	4.92	15.36	66.67	-2.40	-7.51	35.51
	4.63	14.47	57.89	-2.69	-8.40	26.74

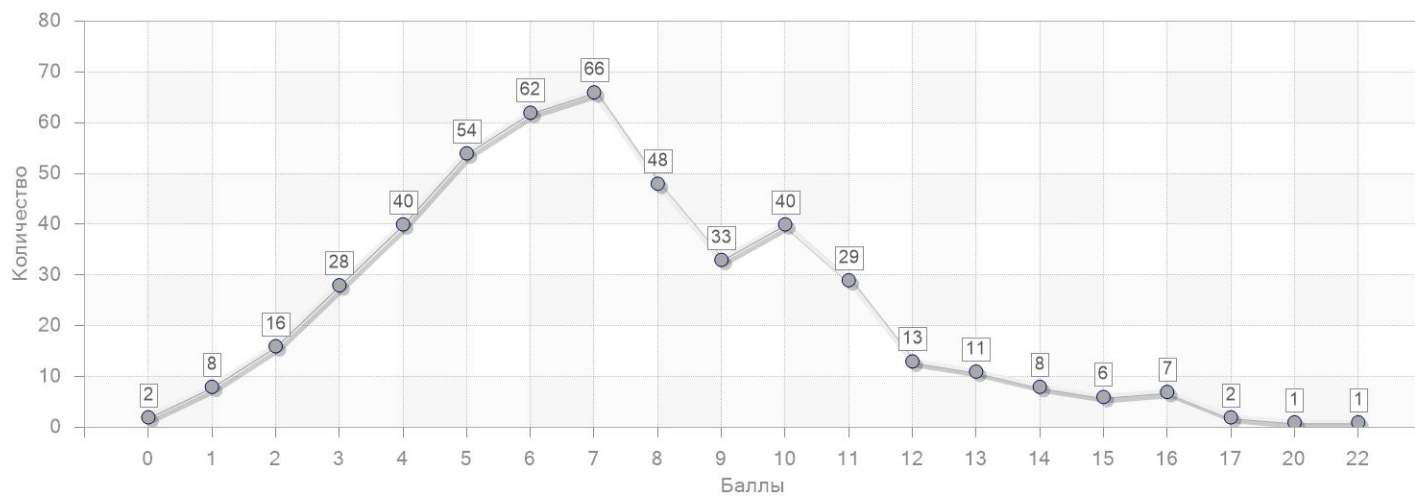
### 3.

#### 3.1.

0	2	0.42
1	8	1.68
2	16	3.37
3	28	5.89
4	40	8.42
5	54	11.37
6	62	13.05
7	66	13.89
8	48	10.11
9	33	6.95
10	40	8.42
11	29	6.11
12	13	2.74
13	11	2.32
14	8	1.68
15	6	1.26
16	7	1.47
17	2	0.42
20	1	0.21
22	1	0.21

#### 3.1.1.

### 3.1.1.



### 3.2.

1	239	7.46	23.33	74	30.96
2	236	7.17	22.42	74	31.36



## 4.

### 4.1.

	56.05
	1.50
	3.95

### 4.2.

5.1		0.14
3.3		0.21
2.1		0.21
3.2		0.21
1.1.3		0.70
2.2		1.93
1.3		2.79
1.2		2.79
1.4		2.79
1.1		2.79
5.3		5.79
5.5		5.79
5.6		5.79
2.1.12		8.77
1.1.1		10.71
2.1.4		11.26
2.2.2		11.26
2.1.2		16.00
2.1.1		16.00
5.2		19.16
4.1.5		30.11

## 4.2.

3.2.6		30.11
4.2.1		32.00
1.2.7		33.47
4.1.1		33.89
5.1.5		43.79
6.3		52.84
5.3.1		72.63
5.5.3		72.84
5.1.3		73.05
5.1.1		73.05
2.1.5		82.74
6.2.1		97.26

## 4.3.

2.3		1.93
2.2		1.93
5.3		2.57
5.1		3.47
6.3		7.34
5.2		8.82
2.1		8.88
6.1		10.71
4.1	( , , )	14.71
4.2	); ( , ,	19.16
3.1		32.00
3.2		32.00
3.3		32.00
1.1		33.47
1.2		33.47

### 4.3.

1.3		33.47
5.4		52.84
6.2		97.26

### 4.4.

1	1.1.1	6.1	70.74
2	6.2.1	6.2	97.26
3	5.1.5	4.1	43.79
4	6.3	5.4	52.84
5	2.1.5	2.1	82.74
6	5.5.3 ; 5.1.3 ; 5.1.1	5.2 ; 4.1	73.05
7	4.1.1 ; 4.2.1	3.2 ; 3.3 ; 3.1	33.89
8	5.5.3 ; 5.3.1 ; 5.2	4.2	72.63
9	1.2.7	1.1 ; 1.2 ; 1.3	33.47
10	2.1.12	6.3	47.16
11	2.1.1 ; 2.1.2	5.1	34.95
12	3.2.6 ; 4.1.5 ; 4.2.1	3.2 ; 3.3 ; 3.1	30.11

#### 4.4.

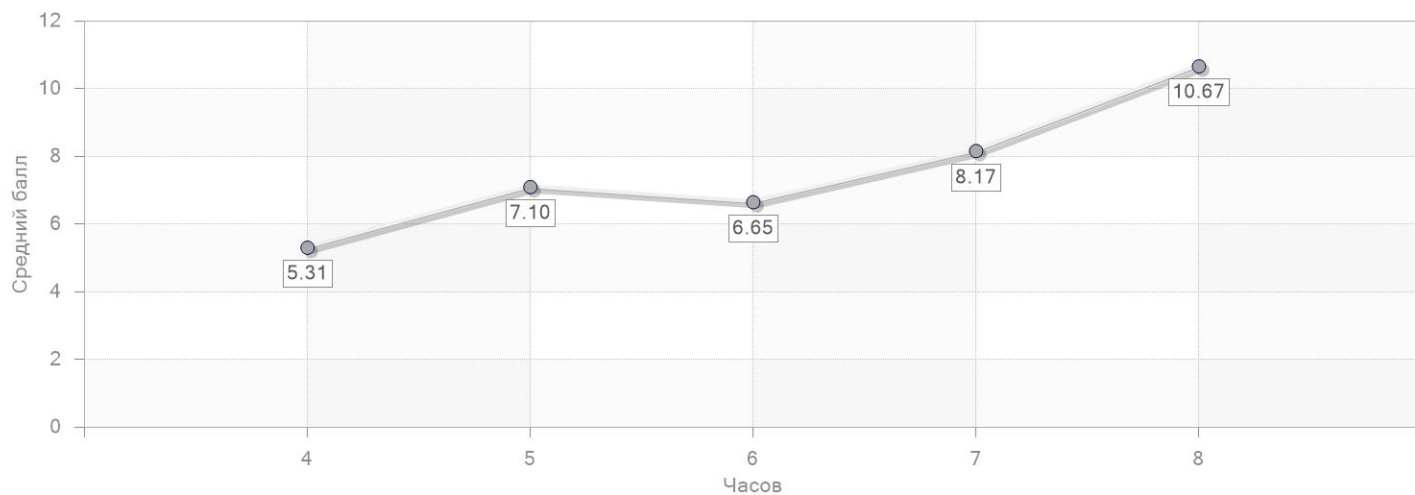
13	2.1.1 ; 2.1.12 ; 2.1.2 ; 2.2.2 ; 2.1.4	2.1	11.26
14	5.5 ; 5.3 ; 5.2 ; 5.6	5.2 ; 5.3 ; 4.2 ( , , , , , ):	5.79
15	2.2	2.1 ; 2.3 ; 2.2	5.37
16	5.1	5.2 ; 5.3 ; 4.1 ) ( , , ,	0.14
17	1.1.3 ; 2.1.12 ; 1.1.1	6.1 ; 6.3	0.70
18	2.2 ; 3.3 ; 3.2 ; 2.1	5.1 ; 2.1 ; 2.3 ; 2.2	0.21
19	1.3 ; 1.2 ; 1.1 ; 1.4	5.1 ; 5.3	2.79

## 5.

### 5.1.

4	103	5.31	16.60	59	57.28
5	98	7.10	22.19	28	28.57
6	168	6.65	20.80	56	33.33
7	6	8.17	25.52	0	0
8	100	10.67	33.34	5	5.00

#### 5.1.1.



### 5.2.

	38	7.08	22.12	11	28.95
	19	6.58	20.56	4	21.05
	56	6.09	19.03	23	41.07
	186	8.47	26.46	37	19.89
	75	6.21	19.42	27	36.00
	38	6.32	19.74	18	47.37
	101	9.87	30.85	9	8.91

## 5.2.

				-	
	95	9.41	29.41	11	11.58

## 5.3.

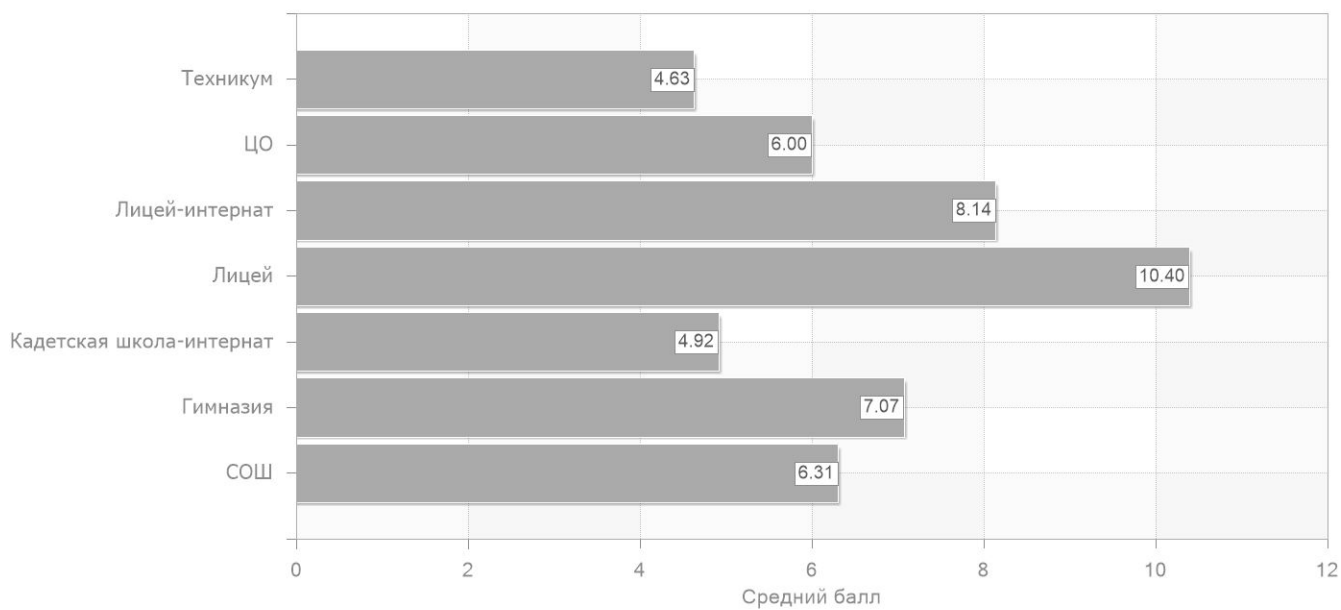
				-	
	475	7.32	22.88	148	31.16

## 6.

### 6.1.

	210	6.31	19.72	89	42.38
	95	7.07	22.11	23	24.21
-	12	4.92	15.36	8	66.67
	93	10.40	32.49	7	7.53
-	42	8.14	25.45	8	19.05
	4	6	18.75	2	50.0
	19	4.63	14.47	11	57.89

#### 6.1.1



### 6.2.

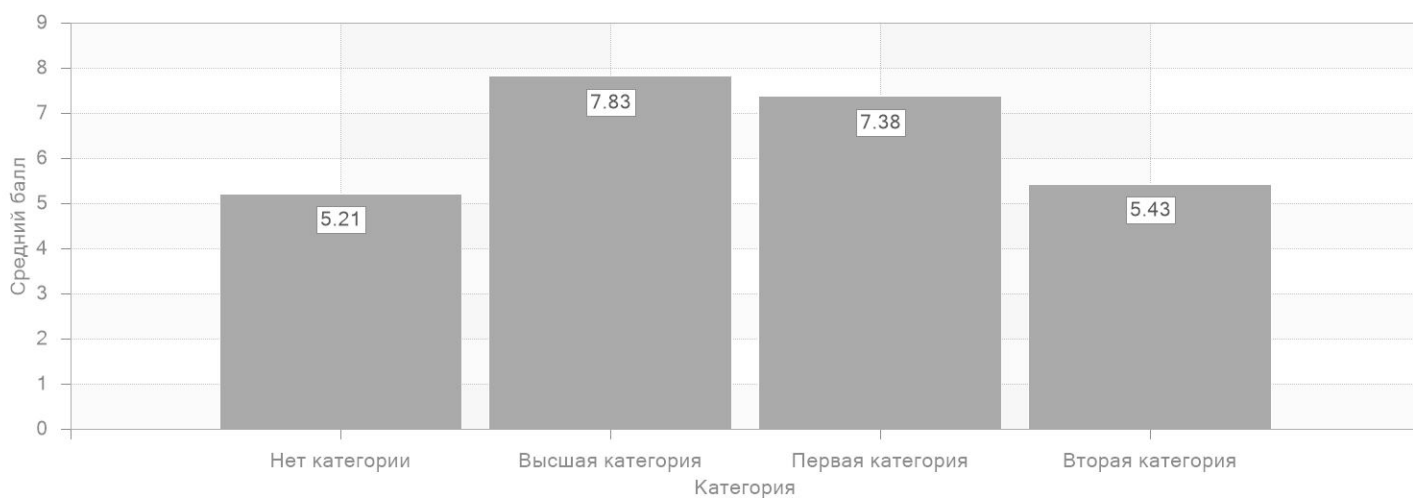
	475	7.32	22.88	148	31.16

## 7.

### 7.1.

	42	5.21	16.29	23	54.76
	232	7.83	24.46	50	21.55
	180	7.38	23.06	62	34.44
	21	5.43	16.96	13	61.90

#### 7.1.1.



## 7.2.

	475	7.32	22.88	148	31.16

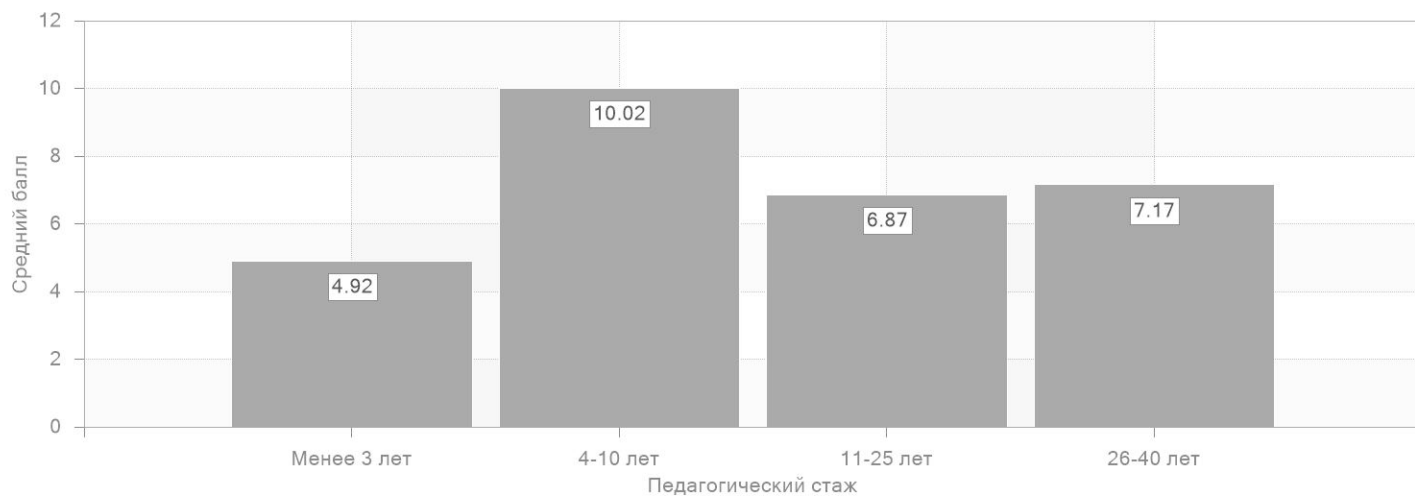
## 7.3.

3	12	4.92	15.36	8	66.67
4-10	53	10.02	31.31	11	20.75
11-25	171	6.87	21.45	59	34.50
26-40	239	7.17	22.40	70	29.29

#### 7.3.1.



### 7.3.1.



### 7.4.

25-29	19	4.63	14.47	11	57.89
30-39	47	10.81	33.78	6	12.77
40-49	158	7.02	21.93	53	33.54
50-59	211	7.37	23.03	57	27.01
59	28	5.64	17.63	13	46.43
25	12	4.92	15.36	8	66.67