



! 1

9

**ABBY®**

2017 .

1.	3
1.1.	3
1.2.	3
2.	4
2.1.	4
2.2.	4
2.2.1.	5
2.3.	5
3.	6
3.1.	6
3.1.1.	7
3.2.	7
4.	8
4.1.	8
4.2.	8
4.3.	9
4.4.	10
5.	12
5.1.	12
5.1.1.	12
5.2.	12
5.3.	12
6.	13
6.1.	13
6.1.1	13
6.2.	13
7.	14
7.1.	14
7.1.1.	14
7.2.	14
7.3.	14
7.3.1.	14
7.4.	15

# 1.

## 1.1.

: !1  
 :  
 :9  
 : 26/11/2017 08:30  
 : ✓

: 10

: 191

## 1.2.

	27/11/2017 05:00	28/11/2017 06:00
	27/11/2017 05:00	28/11/2017 14:00
	27/11/2017 04:30	01/12/2017 15:30
	28/11/2017 05:00	05/12/2017 10:00
	28/11/2017 05:00	05/12/2017 16:15
	06/12/2017 05:00	

## 2.

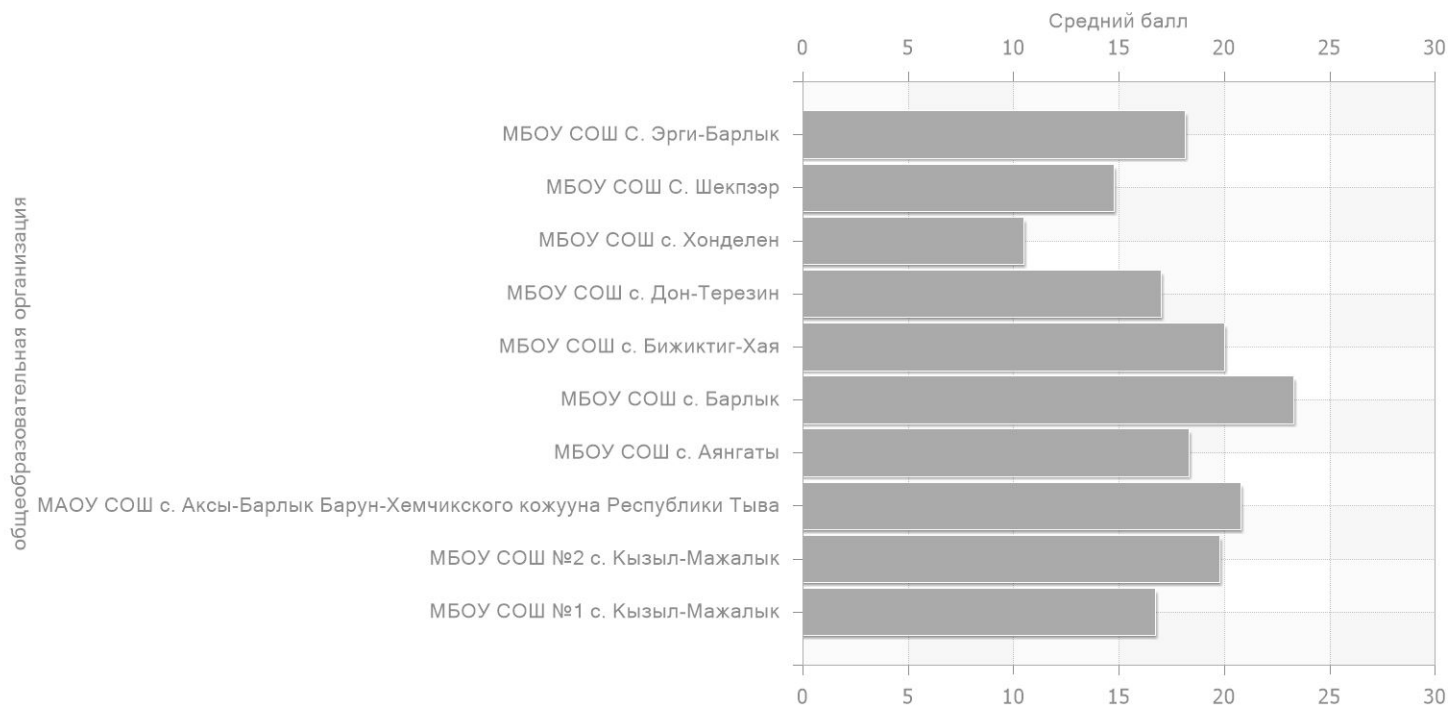
### 2.1.

191	39	18.03	46.22	54	28.27

### 2.2.

1 . -	75	16.72	42.87	24	32.00
2 . -	15	19.8	50.77	4	26.67
.	15	20.8	53.33	3	20.0
.	6	18.33	47.01	1	16.67
c.	20	23.3	59.74	1	5.00
.	8	20	51.28	1	12.50
.	10	17	43.59	3	30.0
.	4	10.5	26.92	3	75.00
.	17	14.76	37.86	9	52.94
.	21	18.14	46.52	5	23.81

2.2.1.



2.3.

1	-	16.72	42.87	32.00	-1.31	-3.35	3.73
2	-	19.8	50.77	26.67	1.77	4.55	-1.61
		20.8	53.33	20.0	2.77	7.11	-8.27
		18.33	47.01	16.67	0.31	0.79	-11.61
с.		23.3	59.74	5.00	5.27	13.52	-23.27
	-	20	51.28	12.50	1.97	5.06	-15.77
	-	17	43.59	30.0	-1.03	-2.63	1.73
		10.5	26.92	75.00	-7.53	-19.30	46.73
		14.76	37.86	52.94	-3.26	-8.36	24.67
	-	18.14	46.52	23.81	0.12	0.30	-4.46

### 3.

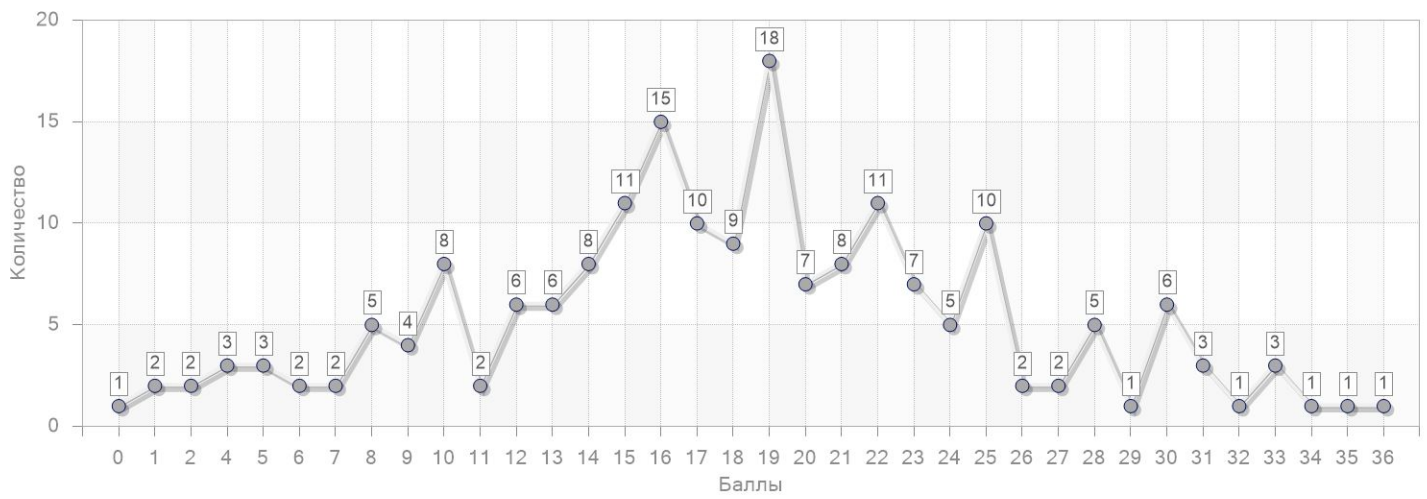
#### 3.1.

0	1	0.52
1	2	1.05
2	2	1.05
4	3	1.57
5	3	1.57
6	2	1.05
7	2	1.05
8	5	2.62
9	4	2.09
10	8	4.19
11	2	1.05
12	6	3.14
13	6	3.14
14	8	4.19
15	11	5.76
16	15	7.85
17	10	5.24
18	9	4.71
19	18	9.42
20	7	3.66
21	8	4.19
22	11	5.76
23	7	3.66
24	5	2.62
25	10	5.24
26	2	1.05
27	2	1.05
28	5	2.62

### 3.1.

29	1	0.52
30	6	3.14
31	3	1.57
32	1	0.52
33	3	1.57
34	1	0.52
35	1	0.52
36	1	0.52

#### 3.1.1.



### 3.2.

1	96	17.04	43.70	32	33.33
2	95	19.02	48.77	22	23.16

4.

4.1.

	32.88
	8.08

4.2.

8.2		8.08
8.6	-	9.92
9.3	( )	9.92
9.4	( )	9.92
11		9.92
9.2		9.92
8.1	.	10.17
8.4	, ,	22.40
7.18		22.40
6.1		22.40
7.15		31.94
7.17		31.94
7.14		31.94
7.16		31.94
5.9	.	31.94
5.13		34.55
7.8	.	35.60
5.8		38.22
7.12		44.50
7.11		44.50
7.13		47.64
5.10		47.64



## 4.2.

5.14	( )	47.64
7.19		49.56
2.2		49.74
2.4		49.74
6.6		59.16
6.16		59.16
7.2		68.59
7.4		68.59
7.3		68.59
7.7	( )	68.59
7.5		68.59
5.7		68.59
6.7	( - -/ - - )	69.11
6.10		69.11
6.8	- - - - -	69.11
5.2	( )	70.68
10.1		71.20
5.1		72.77

## 4.3.

3.4		8.08
3.7		8.08
3.2	( )	8.08
2.2		8.08
2.3	( , , )	8.37
3.3		9.92
3.10	; ;	9.92
3.9	( )	9.92
3.5	( , , , )	9.92
3.8		9.92

### 4.3.

2.4		10.17
2.1	( )	10.17
3.6		22.40
3.1	( )	22.40
1.3		49.74
1.1		55.31

### 4.4.

1	9.3 ( ) ; 9.4 ( ) ; 11 ; 9.2 ; 6.1 ; 8.4 ; 7.18 ; 8.6 ; 8.1	3.6 ; 2.1 ( ) ; 3.1 ( ) ; 2.4 ; 3.3 ; 3.10 ; 3.5 ( ) ; 3.8 ; 3.9 ( )	44.80
2	8.1	2.1 ( ) ; 2.3 ( ) ; 2.4	62.83
3	10.1	1.1	71.20
4	6.6 ; 6.16	1.1	59.16
5	6.10 ; 6.8 ; 6.7 ( - - - - )	1.1	69.11
6	2.4 ; 2.2	1.3	49.74
7	5.1	1.1	72.77
8	5.2 ( )	1.1	70.68
9	7.2 ; 7.3 7.4 ; 7.7 ; 7.3 ( ) ; 7.5 ; 5.7 ; 7.19	1.1	68.59
10	7.8 ; 7.19	1.1	35.60
11	5.13	1.1	37.17

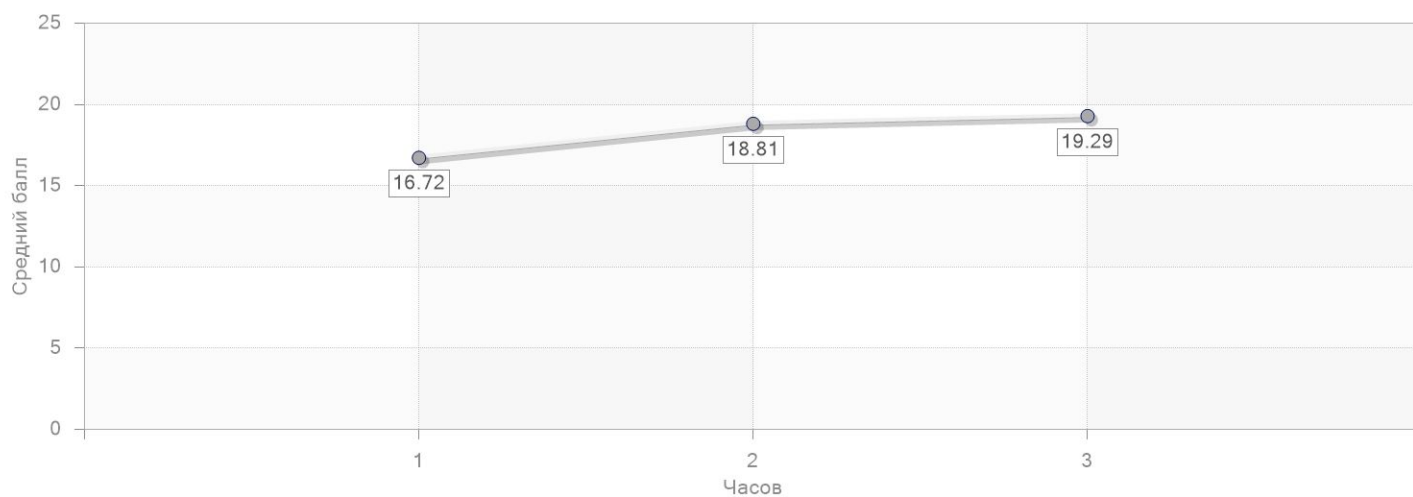


## 5.

### 5.1.

1	75	16.72	42.87	24	32.00
2	102	18.81	48.24	28	27.45
3	14	19.29	49.45	2	14.29

#### 5.1.1.



### 5.2.



### 5.3.

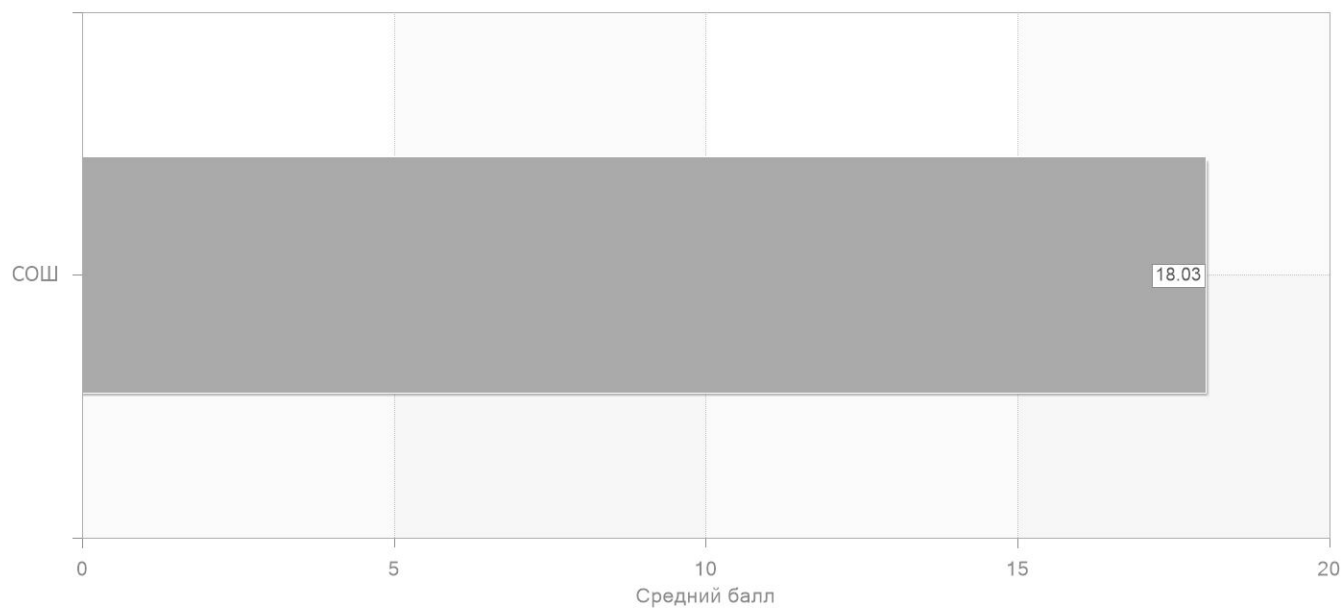
	191	18.03	46.22	54	28.27

## 6.

### 6.1.

	191	18.03	46.22	54	28.27

#### 6.1.1



### 6.2.

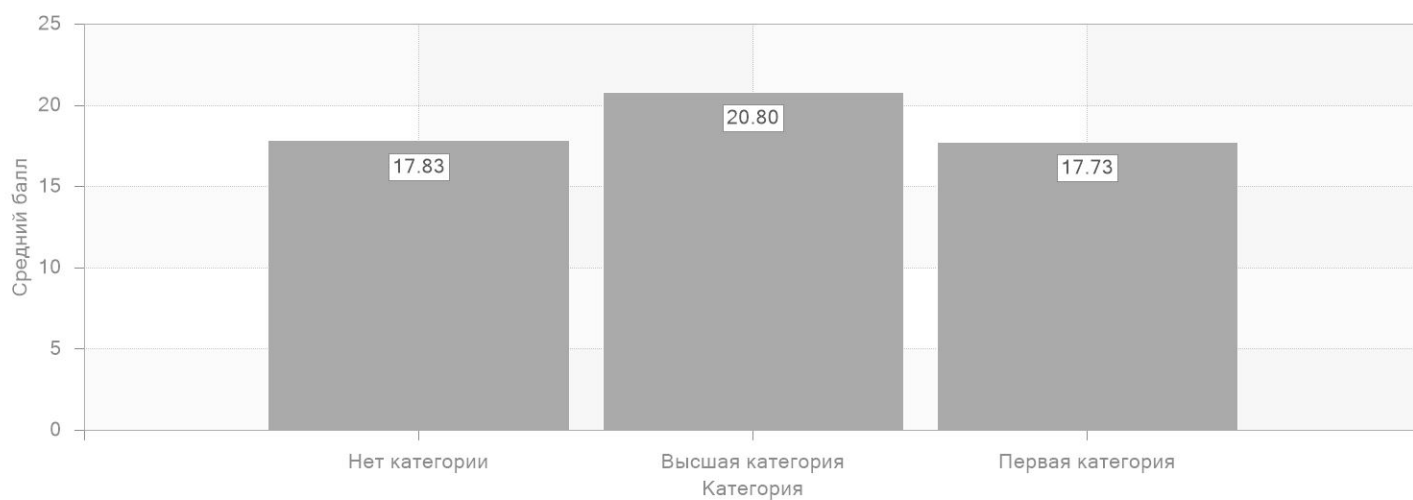
	191	18.03	46.22	54	28.27

## 7.

### 7.1.

	105	17.83	45.71	29	27.62
	15	20.8	53.33	3	20.0
	71	17.73	45.47	22	30.99

#### 7.1.1.



### 7.2.

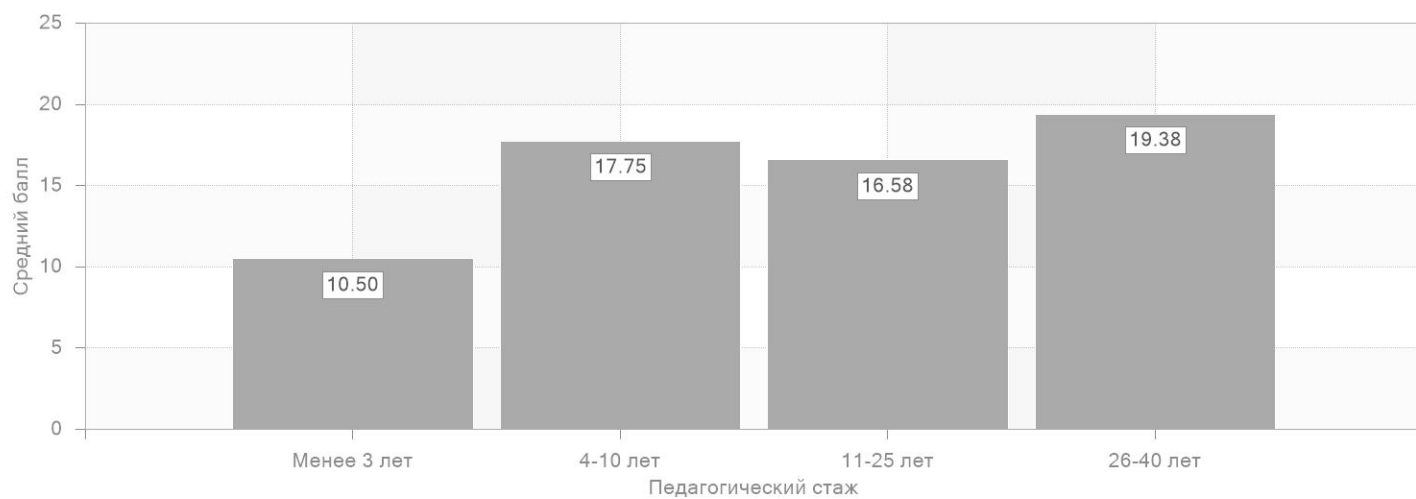
	191	18.03	46.22	54	28.27

### 7.3.

3	4	10.5	26.92	3	75.00
4-10	63	17.75	45.50	17	26.98
11-25	43	16.58	42.52	15	34.88
26-40	81	19.38	49.70	19	23.46

#### 7.3.1.

### 7.3.1.



### 7.4.

25-29	63	17.75	45.50	17	26.98
30-39	28	14.86	38.10	11	39.29
40-49	15	19.8	50.77	4	26.67
50-59	73	19.32	49.53	18	24.66
59	8	20	51.28	1	12.50
25	4	10.5	26.92	3	75.00